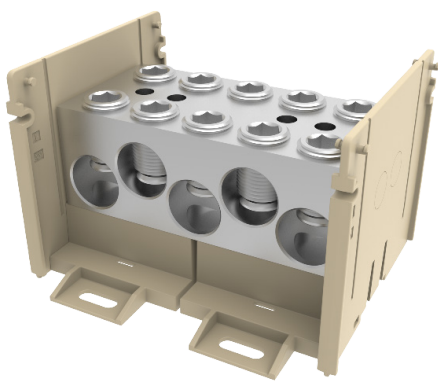
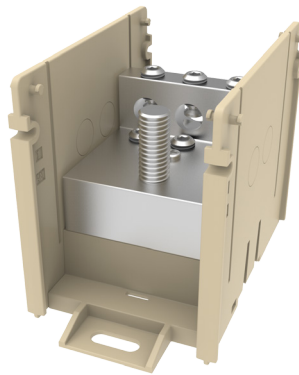


Not a Chip off the Old Block!

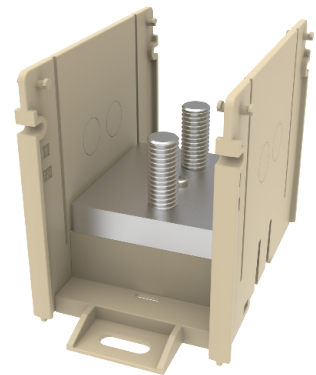
VERSIPOLE™ Configurable Power Distribution Blocks Product Line Expansion



Double-Wide



Box-to-Stud



Stud-to-Stud

We are pleased to announce the expansion of our line of VERSIPOLE™ Configurable Series Power Distribution Blocks. The expansion includes the introduction of three (3) new styles: Double-Wide, Box-to-Stud, and Stud-to-Stud. These new styles are available in several different configurations.

Our current offering includes blocks that can accommodate 1 to 2 run conductors and 1 to 12 tap conductors. The Double-Wide series will expand the run side capability to accept up to 5 conductors while expanding the tap side capability to accept up to 24 conductors. Box-to-Stud styles are available in medium and large bases and allow a lug to be terminated onto a 3/8" or 1/2" diameter stud respectively on the run side while accommodating up to 12 conductors on the tap side. The Stud-to-Stud configurations utilize a stud for terminating lugs on both the run and tap sides.

Each of these new configurations include the same features and benefits as the previously released Configurable Series VERSIPOLE™ "Open" and "Finger-Safe" styles. The expansion also increases the flexibility of the offering by providing end users additional options when splicing and tapping conductors to distribute power to secondary circuits.



Stud-to-Stud application

Customer Service 1-800-346-4175 | Tool Service Center 1-800-426-8720 | Technical Services 1-800-451-4956 | www.burndy.com